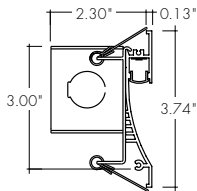




Features

- 24VDC Class 2 fixtures made to order up to 120".
- Approved for closet/storage space installation per NEC 410.16(A)(3) and 410.16(C)(5)
- Class 2 listed for damp locations
- Proprietary strong bond solder method handles up to 50 lbs of pull force on wire leads and connectors
- High Color Quality options offer premium quality and vibrant colors with R9 values up to 97
- 5 Year warranty



Finish Options (see page 2 for additional information)

- Silver Anodized
- Black
- Bronze
- White
- Matte Black
- Warm Nickel
- Aged Brass
- Polished Gold
- Chrome



Technical Information

MODEL	High Color Quality		
	7250	72HO	72VHO
OUTPUT OPTIONS			
Lumens Output (3000K) <small>(with a Frosted Lens)</small>	176 lm/ft	286 lm/ft	348 lm/ft
Average Power Consumption <small>(for a 4' section)</small>	2.8 W/ft	4.8 W/ft	6 W/ft
Efficacy	63 lm/W	60 lm/W	58 lm/W
Max Run Length <small>(in series)</small>	40 ft	31 ft	22 ft
Max Ambient Temperature	40°C [104°F]	40°C [104°F]	40°C [104°F]

CCT	High Color Quality (72)				
	Multiplier <small>(reference - 3000K)</small>	CRI	R _f	R _g	R ₉
1900K	0.55	96	94	97	90
2200K	0.70	96	95	101	89
2400K	0.72	98	97	101	91
2700K	0.74	97	96	101	91
3000K	1.00	97	95	104	97
3500K	1.02	97	94	105	97
4100K	1.07	97	90	99	97

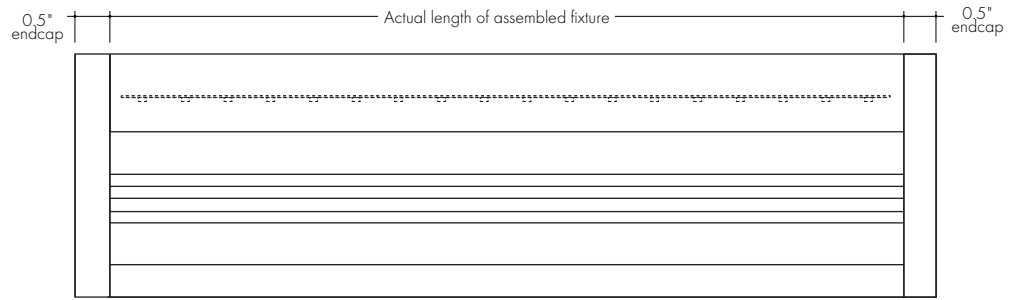
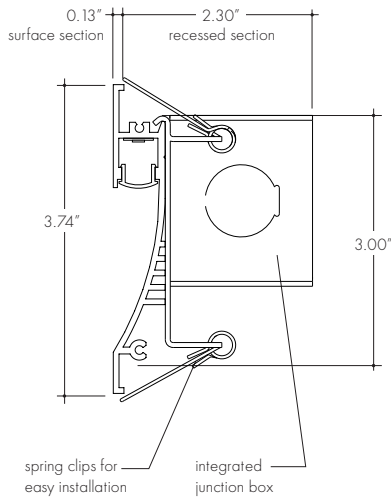
*Max Ambient Temperature to maintain L70 of 50k+ hours. Exceeding Max Ambient Temperature may result in decreased life/output. Consult Technical Support for specific inquiries.

Ordering Code

MODEL	LENGTH ¹	OUTPUT	CCT	LENS ²	FINISH ³	LEFT END	RIGHT END
WP - Wall Plus	8"-120" 1" increments	7250 - Standard 72HO - High 72VHO - Very High	19K - 1900K 22K - 2200K 24K - 2400K 27K - 2700K 30K - 3000K 35K - 3500K 41K - 4100K	F - Frosted	SA - Silver Anodized BK - Black BZ - Bronze WH - White MBK - Matte Black WN - Warm Nickel LB - Light Brass PG - Polished Gold ⁴ CH - Chrome ⁴	LE - With End Cap LN - Without End Cap	RE - With End Cap RN - Without End Cap

1 - Custom lengths and increments are available, please consult Inside Sales with specific request.
 2 - High Color Quality options can be used to comply with Title 24 JA8 depending on Output, CCT, and Lens selections. See multiplier charts to calculate specific efficacies.
 3 - Non SA finishes may have extended lead times. Custom RALs are available, please consult Inside Sales with specific request.
 4 - Polished Gold finishes have a maximum fixture length of 48", and Chrome finishes have a maximum fixture length of 72".

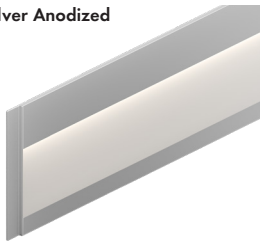
Product Dimensions



Finish Options

- Finish options are available in a wide variety, allowing for complete customization of style and aesthetic.
- Non Silver Anodized finishes may have extended lead times.
- Polished Gold finishes have a maximum fixture length of 48", and Chrome finishes have a maximum fixture length of 72".
- Custom RALs are available, please consult Inside Sales with specific request.

Silver Anodized



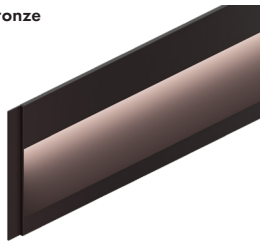
Silver Anodized is a soft silver with a clear finish.

Black



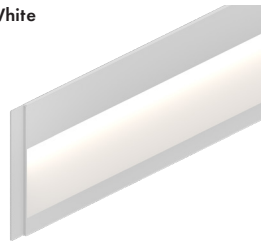
Black is a true deep black with a glossy finish.

Bronze



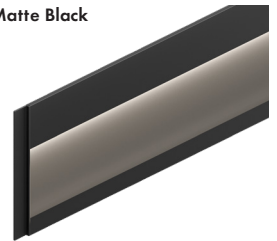
Bronze is a rich, dark brown with a satin finish.

White



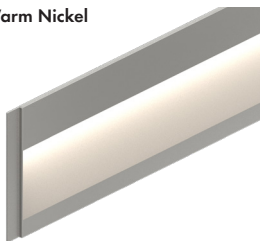
White is a polar bright white and field paintable.

Matte Black



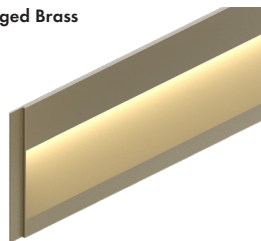
Matte Black is a dark, pitch-black with a soft flat finish.

Warm Nickel



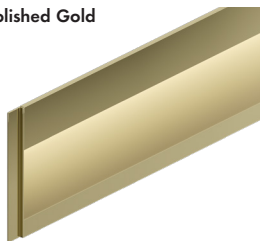
Warm Nickel is a soft, silvery smoke with warm tones and a satin finish.

Aged Brass



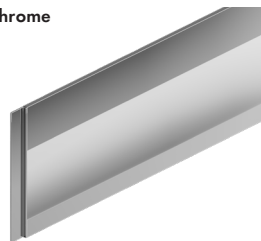
Aged Brass is a deep brown shade with slightly golden undertones.

Polished Gold



Polished Gold is bright and radiant for a brilliant finish.

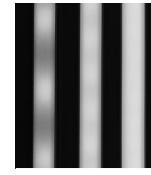
Chrome



Chrome is a highly reflective silver polish.

Light Transmission and Dotting

Output Options	Lens/Accessory
	Frosted Lens
72SO	SD
72HO	SD
72VHO	SD
Transmission Percentage	100%

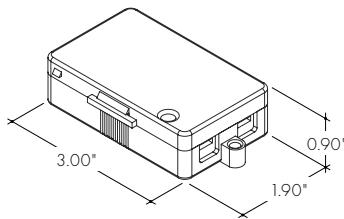


CD SD ND
 CD - Clear Dotting
 SD - Slight Dotting
 ND - No Dotting

Accessory Options

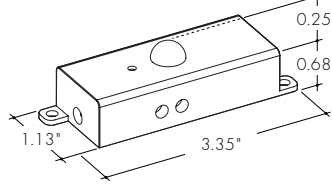
LVSP-4T-BK

Low Voltage, 4 Terminal Splice Box, Black



OS-DC-F4-BK

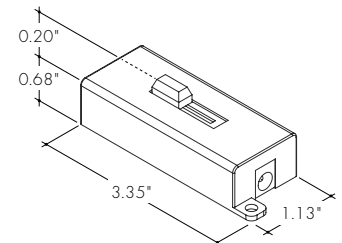
Occupancy Sensor



Male Quick Connect, FMA, LMC, LYC, or IS-DC are required for input and output.

DIM-DC-F4-BK

24VDC Low Voltage In-line Dimmer Module

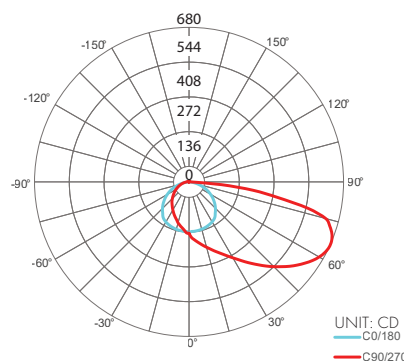


Male Quick Connect, FMA, LMC, LYC, or IS-DC are required for input and output.

Photometry

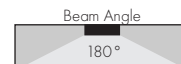
WP-48-30K-72VHO-F

Wall Plus, 4ft, 3000K, VHO, Frosted Lens



Zonal Lumen Summary 3000K

Zone	Lumen	% Fixture
0-30	201	14.4%
0-40	357	25.7%
0-60	802	57.6%
0-90	1379	99.0%
Total	1392	100.0%



Power Consumption

Tested at Full Power with PDC Series power supplies.

Standard Nominal Lengths offered provide minimal shadowing. For alternate lengths, please consult Inside Sales with specific request.

High Color Quality (72)

Nominal Length (in)	Actual Length	Watts			Nominal Length (in)	Actual Length	Watts			Nominal Length (in)	Actual Length	Watts			Nominal Length (in)	Actual Length	Watts		
		SO	HO	VHO			SO	HO	VHO			SO	HO	VHO			SO	HO	VHO
8	7 9/16	1.6	2.8	3.6	43	42 6/16	9.6	16.0	21.2	78	77 2/16	17.3	27.9	36.3	113	-	-	-	
9	8 12/16	1.9	3.2	4.2	44	43 8/16	9.8	16.4	21.7	79	78 4/16	17.7	28.5	37.2	114	113	25.0	39.6	50.8
10	9 14/16	2.2	3.7	4.8	45	44 11/16	10.0	16.7	22.1	80	79 7/16	17.9	28.9	37.6	115	114 3/16	25.2	39.9	51.2
11	-	-	-	-	46	45 13/16	10.2	17.1	22.6	81	80 9/16	18.1	29.2	38.0	116	115 5/16	25.6	40.5	52.0
12	11 2/16	2.7	4.4	6.2	47	47	10.5	17.4	23.1	82	81 12/16	18.3	29.5	38.4	117	116 8/16	25.9	40.8	52.4
13	12 4/16	2.7	4.4	6.2	48	-	-	-	-	83	82 14/16	18.5	29.8	38.8	118	117 10/16	26.1	41.1	52.8
14	13 7/16	2.9	4.8	6.7	49	48 2/16	10.7	17.8	23.5	84	-	-	-	-	119	118 13/16	26.3	41.4	53.2
15	14 9/16	3.1	5.2	7.3	50	49 5/16	11.1	18.6	24.4	85	84 1/16	18.7	30.1	39.2	120	119 15/16	26.5	41.7	53.6
16	15 12/16	3.4	5.6	7.8	51	50 8/16	11.4	18.9	24.9	86	85 3/16	19.2	30.8	40.0					
17	16 14/16	3.6	6.0	8.3	52	51 10/16	11.6	19.3	25.3	87	86 6/16	19.4	31.1	40.4					
18	-	-	-	-	53	52 13/16	11.9	19.7	25.7	88	87 8/16	19.6	31.5	40.8					
19	18 1/16	3.9	6.5	8.9	54	53 15/16	12.1	20.1	26.1	89	88 11/16	19.9	31.8	41.1					
20	19 3/16	4.4	7.3	9.9	55	-	-	-	-	90	89 13/16	20.1	32.2	41.5					
21	20 6/16	4.6	7.7	10.5	56	55 2/16	12.3	20.5	26.6	91	91	20.4	32.5	41.9					
22	21 8/16	4.8	8.1	11.0	57	56 4/16	12.8	21.3	27.4	92	-	-	-	-					
23	22 11/16	5.1	8.6	11.5	58	57 7/16	13.1	21.6	27.8	93	92 3/16	20.6	32.9	42.3					
24	23 13/16	5.3	9.0	12.1	59	58 9/16	13.3	22.0	28.3	94	93 5/16	21.1	33.6	43.1					
25	25	5.6	9.4	12.6	60	59 12/16	13.6	22.4	28.7	95	94 8/16	21.3	33.9	43.4					
26	-	-	-	-	61	60 14/16	13.8	22.8	29.1	96	95 10/16	21.5	34.2	43.8					
27	26 2/16	5.8	9.8	13.1	62	-	-	-	-	97	96 13/16	21.8	34.6	44.2					
28	27 5/16	6.2	10.5	14.1	63	62 1/16	14.0	23.1	29.6	98	97 15/16	22.0	34.9	44.6					
29	28 8/16	6.5	10.9	14.5	64	63 3/16	14.5	23.8	30.5	99	-	-	-	-					
30	29 10/16	6.7	11.2	15.0	65	64 6/16	14.7	24.1	31.0	100	99 2/16	22.2	35.2	45.0					
31	30 13/16	6.9	11.6	15.5	66	65 8/16	14.9	24.4	31.4	101	100 4/16	22.5	35.9	45.9					
32	31 15/16	7.1	12.0	16.0	67	66 11/16	15.1	24.7	31.9	102	101 7/16	22.7	36.2	46.3					
33	-	-	-	-	68	67 13/16	15.3	25.0	32.4	103	102 9/16	22.9	36.5	46.7					
34	33 2/16	7.3	12.3	16.5	69	69	15.5	25.4	32.8	104	103 12/16	23.1	36.8	47.1					
35	34 4/16	7.8	13.1	17.4	70	-	-	-	-	105	104 14/16	23.3	37.1	47.5					
36	35 7/16	8.0	13.4	17.9	71	70 3/16	15.8	25.7	33.3	106	-	-	-	-					
37	36 9/16	8.2	13.8	18.4	72	71 5/16	16.2	26.3	34.2	107	106 1/16	23.5	37.4	48.0					
38	37 12/16	8.4	14.2	18.9	73	72 8/16	16.4	26.6	34.7	108	107 3/16	23.9	38.1	48.8					
39	38 14/16	8.7	14.5	19.3	74	73 10/16	16.6	26.9	35.1	109	108 6/16	24.1	38.4	49.2					
40	-	-	-	-	75	74 13/16	16.8	27.3	35.5	110	109 8/16	24.3	38.7	49.6					
41	40 1/16	8.9	14.9	19.8	76	75 15/16	17.1	27.6	35.9	111	110 11/16	24.5	39.0	50.0					
42	41 3/16	9.3	15.6	20.7	77	-	-	-	-	112	111 13/16	24.8	39.3	50.4					

Voltage Drop Calculator

The below chart assumes nominal voltage of 24 Volts and a Voltage Drop Allowance of 3% through the wire

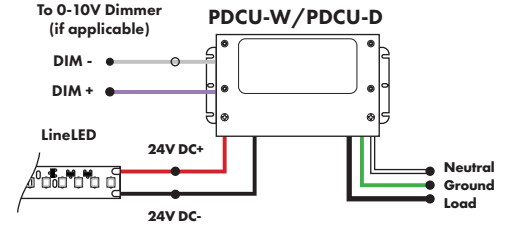
Wattage [W]	Maximum Wire Length From Power Supply to Start of Run [ft]						
	12 AWG	14 AWG	16 AWG	18 AWG	20 AWG	22 AWG	24 AWG
5	1088.2	684.4	430.3	270.6	170.2	107.1	67.3
10	544.1	342.2	215.1	135.3	85.1	53.5	33.7
15	362.7	228.1	143.4	90.2	56.7	35.7	22.4
20	272.0	171.1	107.6	67.7	42.6	26.8	16.8
25	217.6	136.9	86.1	54.1	34.0	21.4	13.5
30	181.4	114.1	71.7	45.1	28.4	17.8	11.2
35	155.5	97.8	61.5	38.7	24.3	15.3	9.6
40	136.0	85.5	53.8	33.8	21.3	13.4	8.4
45	120.9	76.0	47.8	30.1	18.9	11.9	7.5
50	108.8	68.4	43.0	27.1	17.0	10.7	6.7
55	98.9	62.2	39.1	24.6	15.5	9.7	6.1
60	90.7	57.0	35.9	22.6	14.2	8.9	5.6
65	83.7	52.6	33.1	20.8	13.1	8.2	5.2
70	77.7	48.9	30.7	19.3	12.2	7.6	4.8
75	72.5	45.6	28.7	18.0	11.3	7.1	4.5
80	68.0	42.8	26.9	16.9	10.6	6.7	4.2
85	64.0	40.3	25.3	15.9	10.0	6.3	4.0
90	60.5	38.0	23.9	15.0	9.5	5.9	3.7
96	56.7	35.6	22.4	14.1	8.9	5.6	3.5

Power Supplies

See Power Supply instructions and spec sheet for wiring information. For a complete list of compatible dimmers, see Compatible Dimming Chart on the Resources page.

Universal Power Supply 1% 120VAC - 277VAC

MODEL	POWER	OUTPUT
PDCU-D - IP20 Dry Series	30 - 30 W 60 - 60 W 96 - 96 W 3X96 - 3X96 W	24 - 24 VDC
PDCU-W - IP66 Wet Series	96 - 96 W 3X96 - 3X96 W	

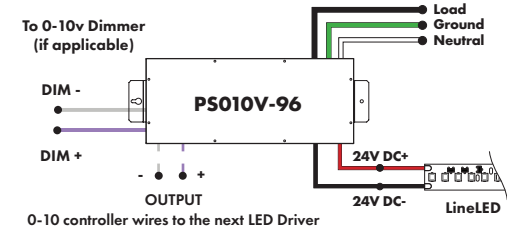


0-10V dims down to 1%, MLV/ELV/TRIAC dims down to 1%.
For a complete list of compatible dimmers, see [Compatible Dimming Chart](#) on the Resources page.

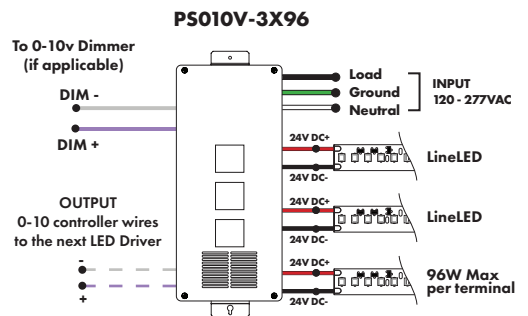
MODELS	PDCU-W 96W	PDCU-W 3X96W	PDCU-D 30W	PDCU-D 60W	PDCU-D 96W	PDCU-D 3X96W
Length	8.66"	11.85"	6.10"	7.93"	8.25"	9.57"
Width	3.73"	4.32"	3.35"	3.35"	4.10"	5.94"
Depth	1.61"	1.81"	1.33"	1.32"	1.56"	1.13"

0-10V Dimming Power Supplies 0.1% 120VAC - 277VAC

MODEL	POWER	OUTPUT	DIMMING
PS010V - 0-10V Power Supply dims down to 0.1%	96 - 96 Watt 3X96 - 3 X 96 Watt	24 - 24 VDC	LIN - Linear LOG - Logarithmic



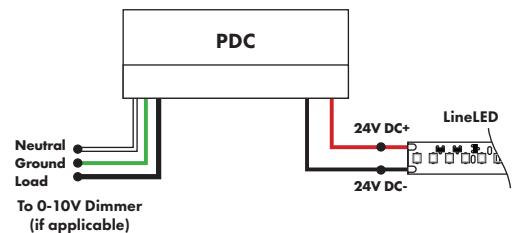
MODELS	96W	3X96
Length	14.40"	15.75"
Width	5.20"	6.62"
Depth	2.60"	4.95"



Triac, MLV, & ELV Compatible Dimmers

MODEL	POWER	OUTPUT
PDC - (IP20) Power Supply	96 - 96 Watts	24 - 24 VDC

MODELS	96W
Length	8.25"
Width	4.10"
Depth	1.56"



Power Supplies

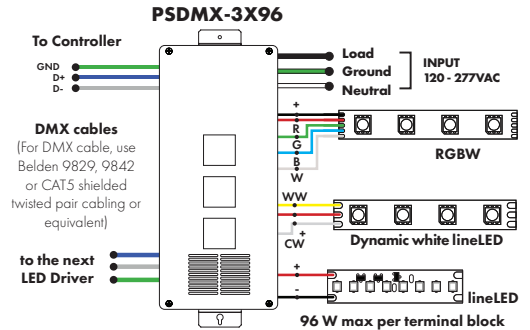
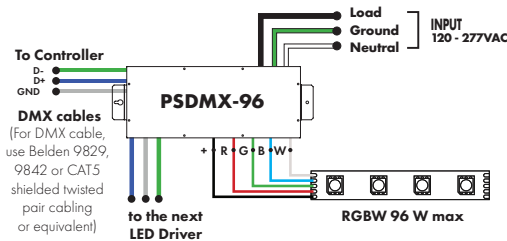
See Power Supply instructions and spec sheet for wiring information. For a complete list of compatible dimmers, see Compatible Dimming Chart on the Resources page.

DMX Dimming Power Supplies 120VAC - 277VAC

MODEL	POWER	OUTPUT
PSDMX - DMX Power Supply dims down to 0%	96 - 96 Watt 3X96 - 3 X 96 Watt	24 - 24 VDC

Features eldoLED's LINEARdrive configurable dimmable drivers

MODELS	96W	3X96
Length	14.40"	15.75"
Width	5.20"	6.62"
Depth	2.60"	4.95"

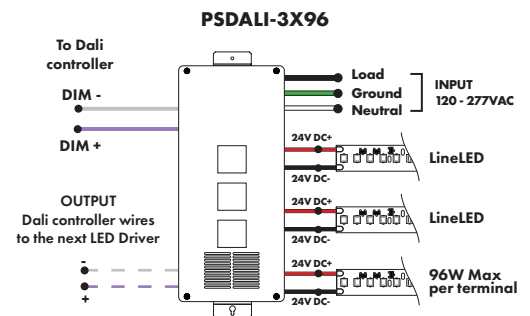
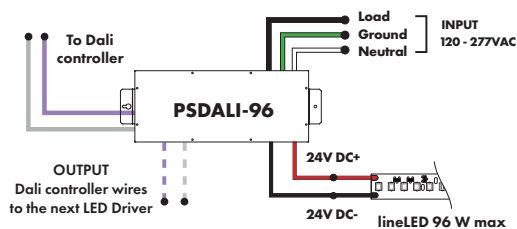


DALI 0% Dimming Power Supplies 120VAC - 277VAC

MODEL	POWER	OUTPUT
PSDALI - DALI Power Supply dims down to 0%	96 - 96 Watt 3X96 - 3 X 96 Watt	24 - 24 VDC

Features eldoLED's LINEARdrive configurable dimmable drivers

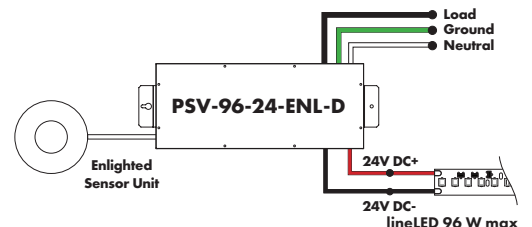
Model	96W	3X96
Length	14.40"	15.75"
Width	5.20"	6.62"
Depth	2.60"	4.95"



Enlighted Enabled Dimming Power Supplies 120VAC - 277VAC

MODEL	POWER	OUTPUT	DIMMING	LOCATION
PSV - PSV Series	96 - 96 Watt	24 - 24 VDC	ENL - Enlighted Dimming dims down to 0%	D - Damp

Model	96W
Length	14.40"
Width	5.20"
Depth	2.60"



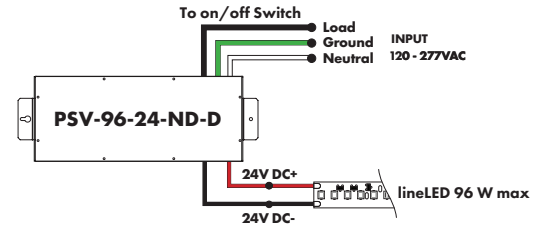
Power Supplies

See Power Supply instructions and spec sheet for wiring information. For a complete list of compatible dimmers, see Compatible Dimming Chart on the Resources page.

Non-Dimming Power Supply 120VAC - 277VAC

MODEL	POWER	OUTPUT	DIMMING	LOCATION
PSV - PSV Series	96 - 96 Watt	24 - 24 VDC	U2ND - Non Dimming	D - Damp

MODELS	96W
Length	14.40"
Width	5.20"
Depth	2.60"

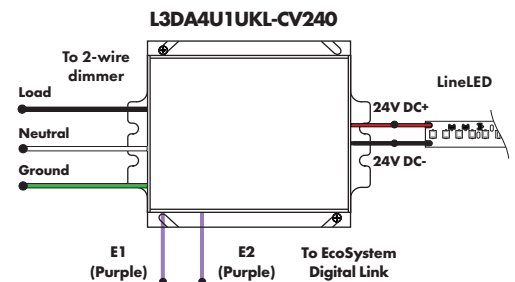
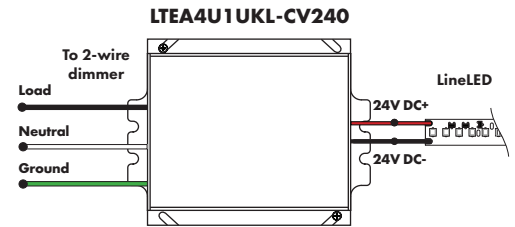


Luminii is a Lutron OEM Advantage Partner

Lutron Power Supplies 1%

MODEL	MODEL
LTEA4U1UKL-CV240	L3DA4U1UKL-CV240
Lutron - HiLume™ 1% 2-wire LED Driver 40W max	HiLume™ 1% EcoSystem Voltage LED driver 40W max
(120V forward phase only)	

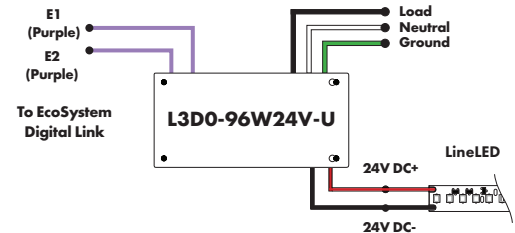
MODELS	LTEA4U1UKL-CV240	L3DA4U1UKL-CV240
Length	4.89"	4.98"
Width	4.00"	4.00"
Depth	2.62"	2.62"



Luminii is a Lutron OEM Advantage Partner

Lutron Power Supplies 0.1%

MODEL	MODELS	L3D0
L3D0-96W24V-U	Length	10.50"
HiLume™ 0.1% EcoSystem Voltage LED Driver with Soft-On, Fade-to-Black™ 96W max	Width	5.50"
	Depth	2.00"



In-Ground Power Supplies

MODEL	POWER	OUTPUT	INPUT
IG - In ground CVE Series	CVE - ELV Dimming DALI - eidoLED Dali dimming Both dims down to 0%	96X2 - 2 X 96 Watt	24 - 24 VDC
			Blank - 120 V 277 - 240/277 V

MODELS	Dual Circuit
Length	8.40"
Width	8.30"
Depth	8.10"

