



Features

The Cove Channel aluminum extrusion has been designed to fit into a cove applications. Multiple reflector options allow for great flexibility and adaptability for any application. Extrusion is field cuttable. Substantial aluminum mass in profile provides excellent heat sink for high power LEDs.

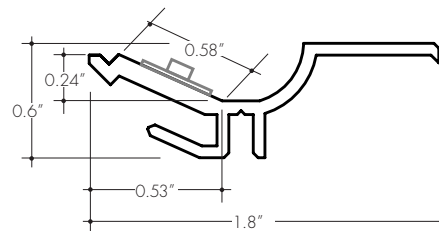
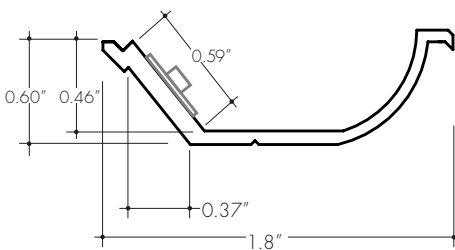
Finish

Silver anodized

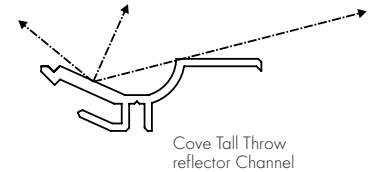
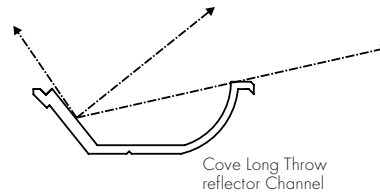
Diffuser Lens

Polycarbonate, snap-in-place, UV resistant

Product Dimensions



	Lens Options
Actual Length	-72" -144"



Ordering Code

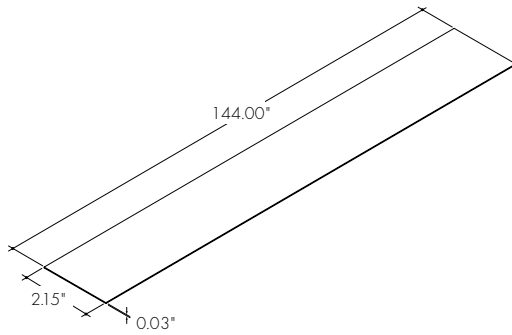
MODEL	LENGTH	FINISH
CLTC - Long Throw Reflector CTTC - Tall Throw Reflector	72 - 72" 144 - 144 ^{*1}	SA SA - Silver anodized

1 - For Channels and Lenses over 90", incremental shipping charges will apply.

Accessories

All accessories sold separately.

mCAL Channel Clear Lens



ORDERING CODE

MCAL-C-144

MCAL-C-144 - Clear Lens, 144"